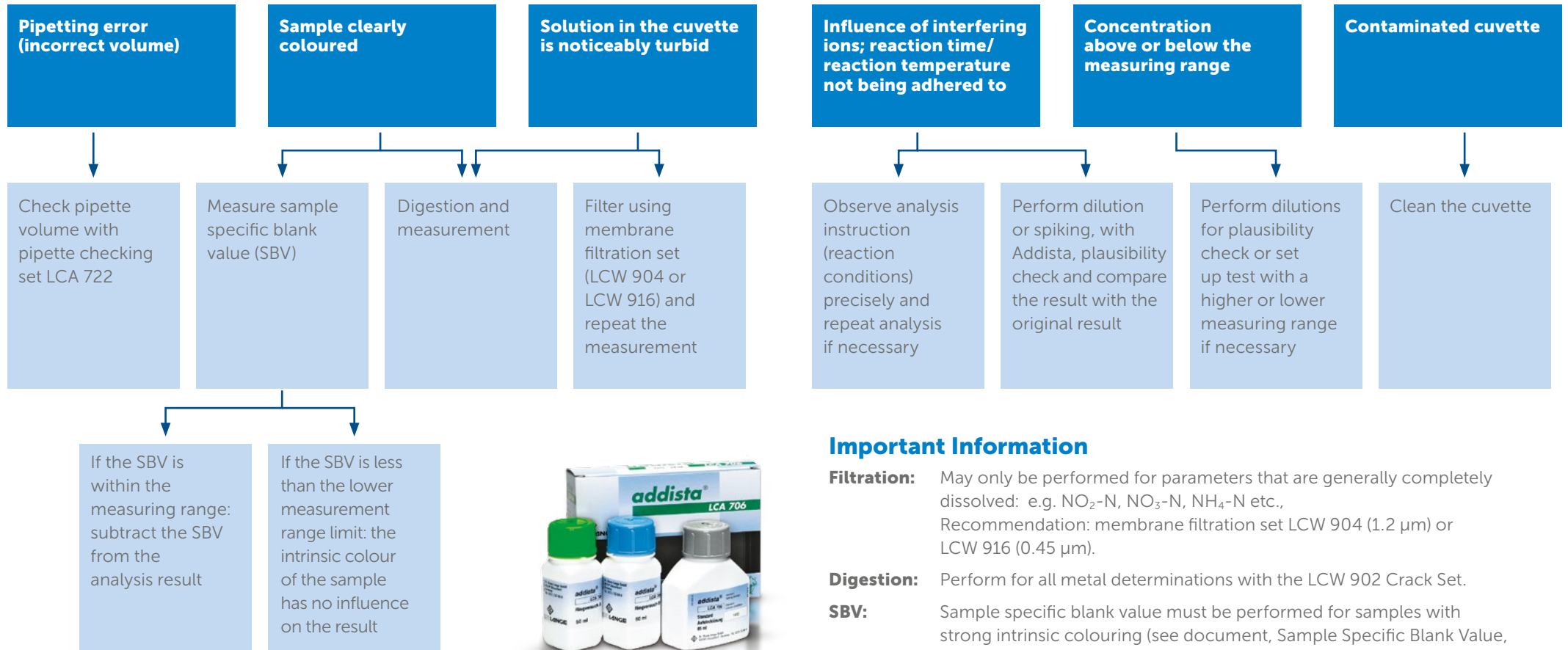


# Error Sources During Analysis



## Important Information

- Filtration:** May only be performed for parameters that are generally completely dissolved: e.g. NO<sub>2</sub>-N, NO<sub>3</sub>-N, NH<sub>4</sub>-N etc., Recommendation: membrane filtration set LCW 904 (1.2 µm) or LCW 916 (0.45 µm).
- Digestion:** Perform for all metal determinations with the LCW 902 Crack Set.
- SBV:** Sample specific blank value must be performed for samples with strong intrinsic colouring (see document, Sample Specific Blank Value, DOC042.52.00280).

An important basic pre-requisite for high result reliability is regular checking of the **entire** analysis system: pipettes, photometer, reagents and general handling. This check is made considerably easier by the AQA system Addista.